



What is the need for specialist housing provision in Argyll and Bute for those accessing health and social care?

ontents

ision and ey ai s

ision

people in Argyll and Bute with health and social care needs have access to housing options that a i ise their health ell eing and

strategic conte t

Argyll Bute ealth and ocial are artnership strategic lan

upport people to live fulfilling lives in their o n ho es for as long as possi le

Argyll and Bute ouncil ocal ousing strategy

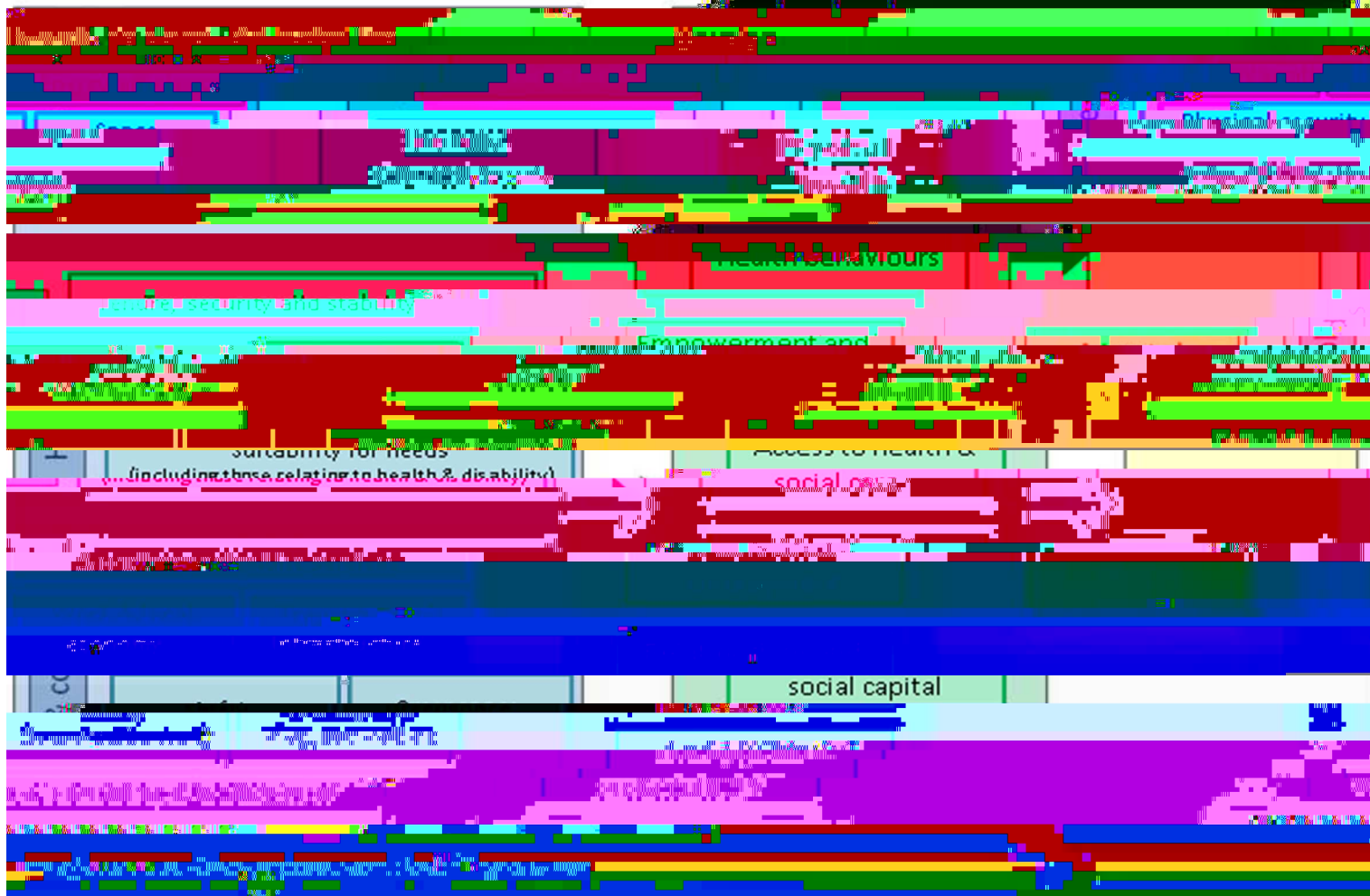
eople are ena led to live independently in their o n ho es

Argyll and Bute utco e prove ent lan

Argyll and Bute s econo ic success is uilt on a gro ing population

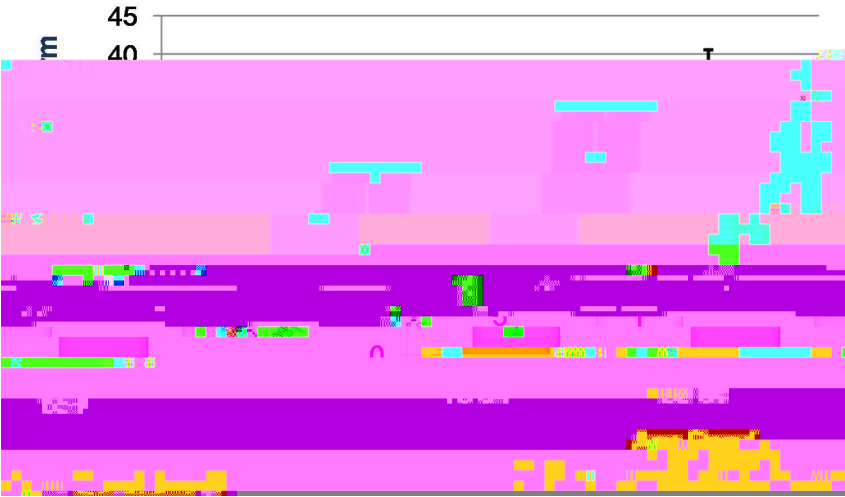


in s et eenousing and ealth and Well eing



projected demographic change

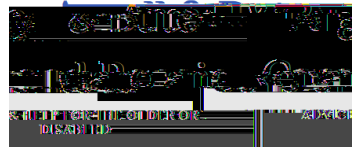
Health conditions



groups with particular housing needs

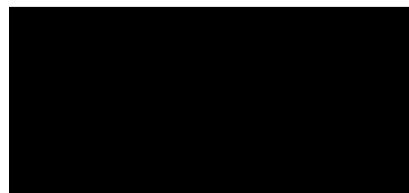
housing and housing services in Argyll and Bute

Argyll and Bute Council housing services



registered social landlords

health and social care partnership



types of specialist housing

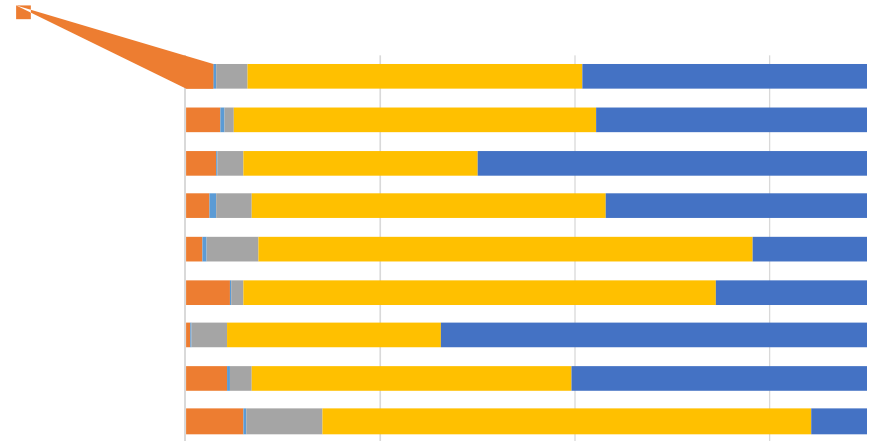
Accessible and Adapted housing

Wheelchair Accessible housing

supported provision

are support services for independent living

total care homes



Waiting lists for specialist accomodation

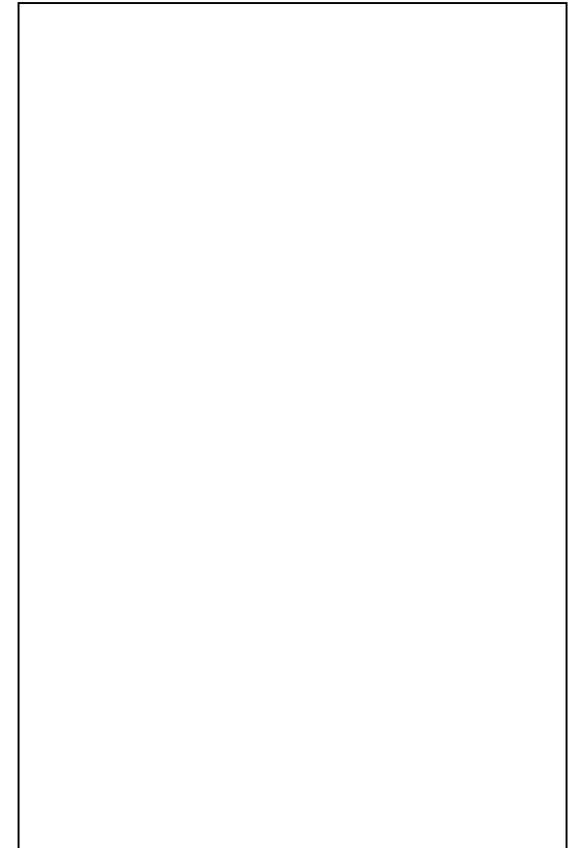
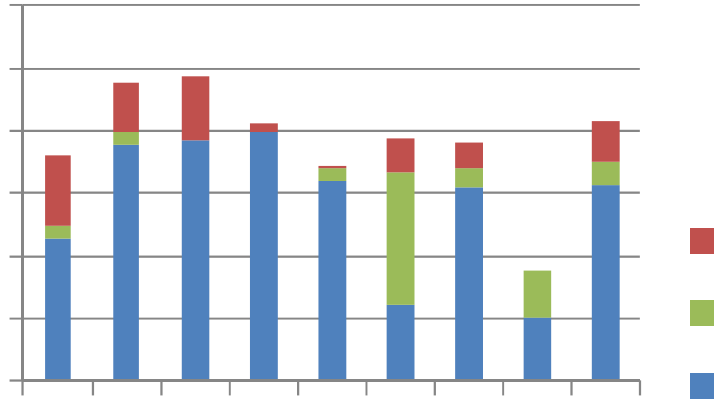
Wheelchair users in Argyll and Bute

are the replacements by funding location and
type of care

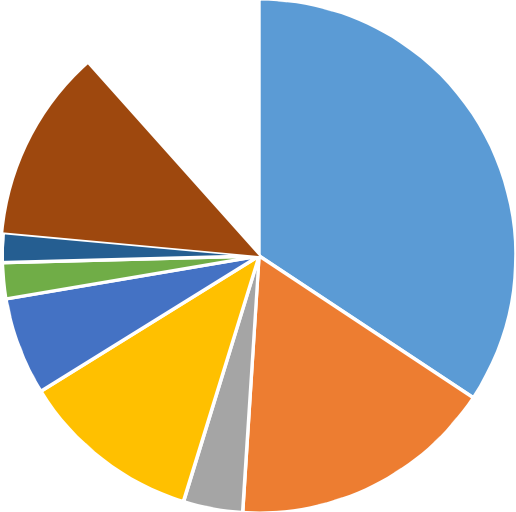
Locations

by funding location and

location of place



elayed discharges from hospital



Actions

Action	Output	Responsible person(s)/ organisation(s)	Timescale
Key Aim 1. There is appropriate and sufficient housing available in each local area to meet the needs of people living there.			
1.1a	<i>Appoint Housing OT post</i> The housing Occupational Therapist will support cross-sector planning for the delivery of appropriate Specialist Provision, including wheelchair accessible housing as required in local areas.	Caroline Baisley/ ABC/HSCP	December 2018
1.1b	<i>Awareness raising seminar for housing sector on health topic(s)</i> The housing OT will coordinate at least one awareness-raising seminar for the housing sector by March 2019 (to include the implications of dementia for housing requirements).	Housing OT/ HSCP/Housing	March 2019

1.2

Care Home bed M4 751851 4719 92 4 1053 ref 1851 5772 92555735H731(a)1.96(w4 45177(M4 751851 4719n809472(-4 4531(h))1.9593(r)7.09 s(u)1.958674.52 1d [(l)4.72893(o)1.958674531(t)-4.4531(n)1.96(e).277158d [(a)1.96(l)4.728d)1.96(e)1st(m)-3u1d [(r)5.00609(a)4 [(P)5.00609

Action	Output	Responsible person(s)/ organisation(s)	Timescale
Key Aim 2. People are aware of the availability of different housing options to enable them to make appropriate choices and are supported to do this if necessary due to learning disability or physical and mental health conditions.			
2.1a	<i>Information & Advice audit</i> Argyll and Bute Council Housing will engage professional support (e.g. Glasgow Centre for Inclusive Living) to carry out audit of information & advice materials by April 2019;	ABC – Housing Services	April 2019
2.1b	<i>Update Information and Advice</i> Update provision/services for targeted client groups by March 2020.	ABC – Housing Services	March 2020
Key Aim 3. Health and Social Care, Housing Association and Argyll and Bute Council housing officers are able to work effectively together to promote early housing options appraisal and early intervention and adaptations as required.			

3.1a *Mapping of engagement structures*
e538235(s)11.1394()JTJ /R24 11 /R24 11 /rpd275832(i)48psa

Action	Output	Responsible person(s)/ organisation(s)	Timescale
--------	--------	--	-----------

Action	Output	Responsible person(s)/ organisation(s)	Timescale
Key Aim 5. Planning for services is based on robust data and information			
5.1	<i>Improve comprehensiveness and consistency of OT caseload data</i> Review protocols for data capture to enable reporting of OT caseload data that includes a breakdown by type of service provision, household type and long-term conditions, by local area.	OTs	April 2019
5.2			