

POLICY ZONE L: CREGGANS TO NEWTON

LANDSCAPE CHARACTERISTICS

With the exception of the area around Strachur, the hinterland rises steeply from the shore and is largely wooded and hummocky in landform. At Newton, the land becomes less hilly and more open with less woodland.

SEASCAPE CHARACTERISTICS

From Creggans to Strachur, the coastline is narrow with a small intertidal reach and is of low relief, with little indentation until the large sweeping bay of Strachur. The enclosed water surface is characterised by the even width of the narrow water channel between Strachur and the western land mass of forestry land around Kenmore and Pennymore, which encourages the visual focus along the length of the loch. The immediate foreshore is largely made up of shingle and small stony beaches. Despite the frequency of settlement, the coastline does not come across as busy and developed, partly because of the quieter road south of Strachur, and also because the small settlements are tucked into secluded locations along the shoreline. The coastline south of Strachur is heavily influenced by man-made structures, with an extensive length of seawall retaining

VISUAL AMENITY

The road follows the coastline, but outwith the settlements is largely separated from the water by a margin of semi-natural woodland. Scattered settlements tucked along the shoreline consistently overlook the loch. In general; views focus along the length of loch to both the north and south, with a particular emphasis on low-level views from coastal settlements, the public road, and a number of view points on either side of Strachur. Views from Newton are to the north and west.

SETTLEMENTS

The coastline is relatively well-developed, with the small settlements of Newton and Leachd and dispersed linear houses, in addition to the more substantial settlement of Strachur.

CURRENT USES

Refer to policy zone L map for locations of current activities.

Recreation

Boating

There are many moorings at Strachur and numerous small recreational angling boats tied up on shore or sitting on trailers. During the summer months a number of sailing boats are moored in the bay at Strachur. Newton Boat club manages a large number of moorings in Newton Bay and adjacent to Stuckreoch. These moorings and a large pontoon indicate considerable recreational use during the spring and summer months. Both Strachur and Newton Bay are charted anchorages (Houston 2004).

Angling

Shore and boat angling is popular along this coastline and occurs year round in the shallower waters of the policy zone.

Water sports

Sailing and water skiing are popular activities along this stretch of coast.

Diving

There are three

Aquaculture

Aquaculture operations have not been developed along this stretch of coast.

Commercial fishing

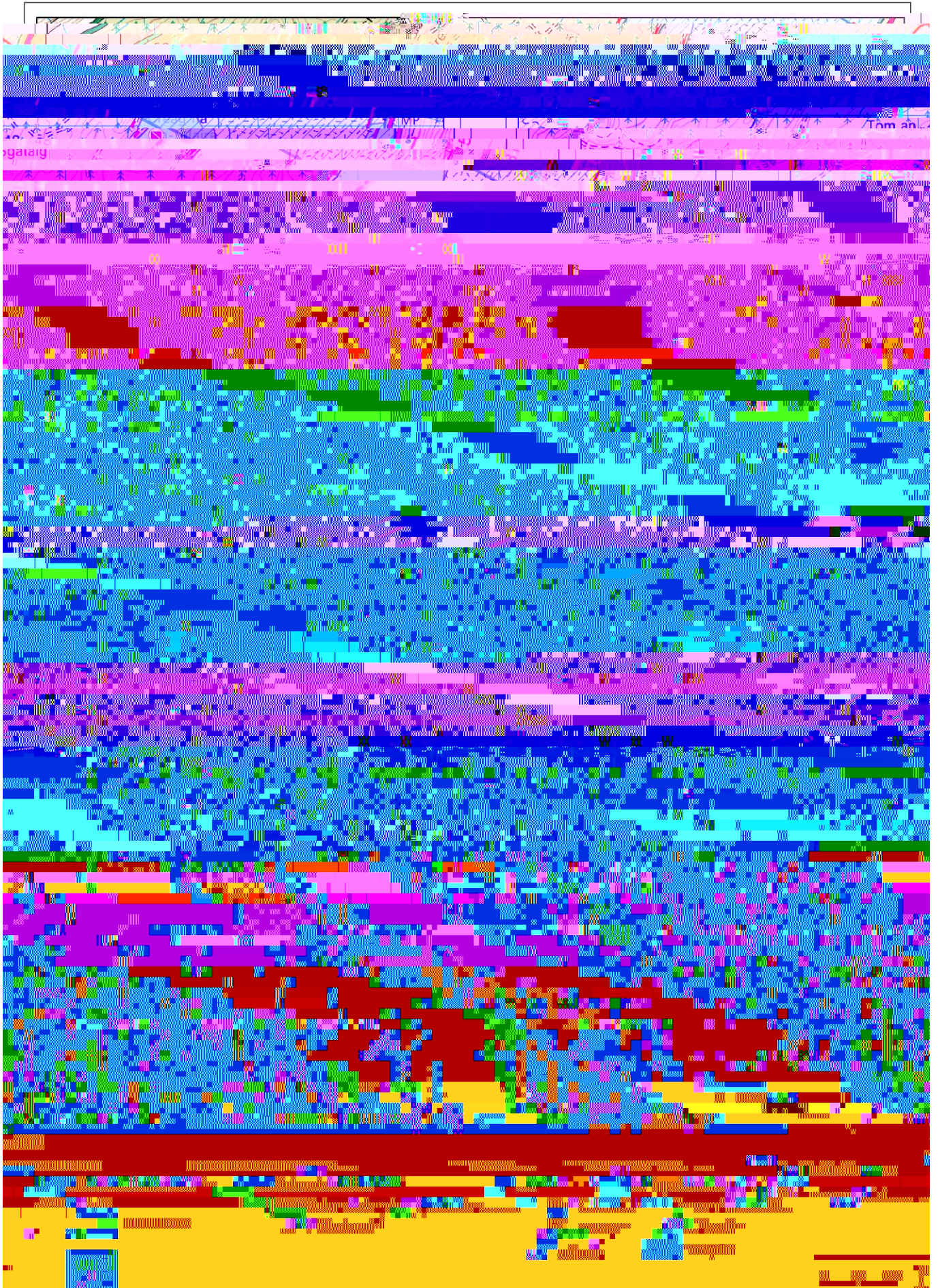
Trawling and creeling for *Nephrops* occurs along the outer part of the policy zone, in water generally greater than 30 m. In poor sea conditions, fishing vessels sometimes anchor in Newton Bay.

Marine Infrastructure

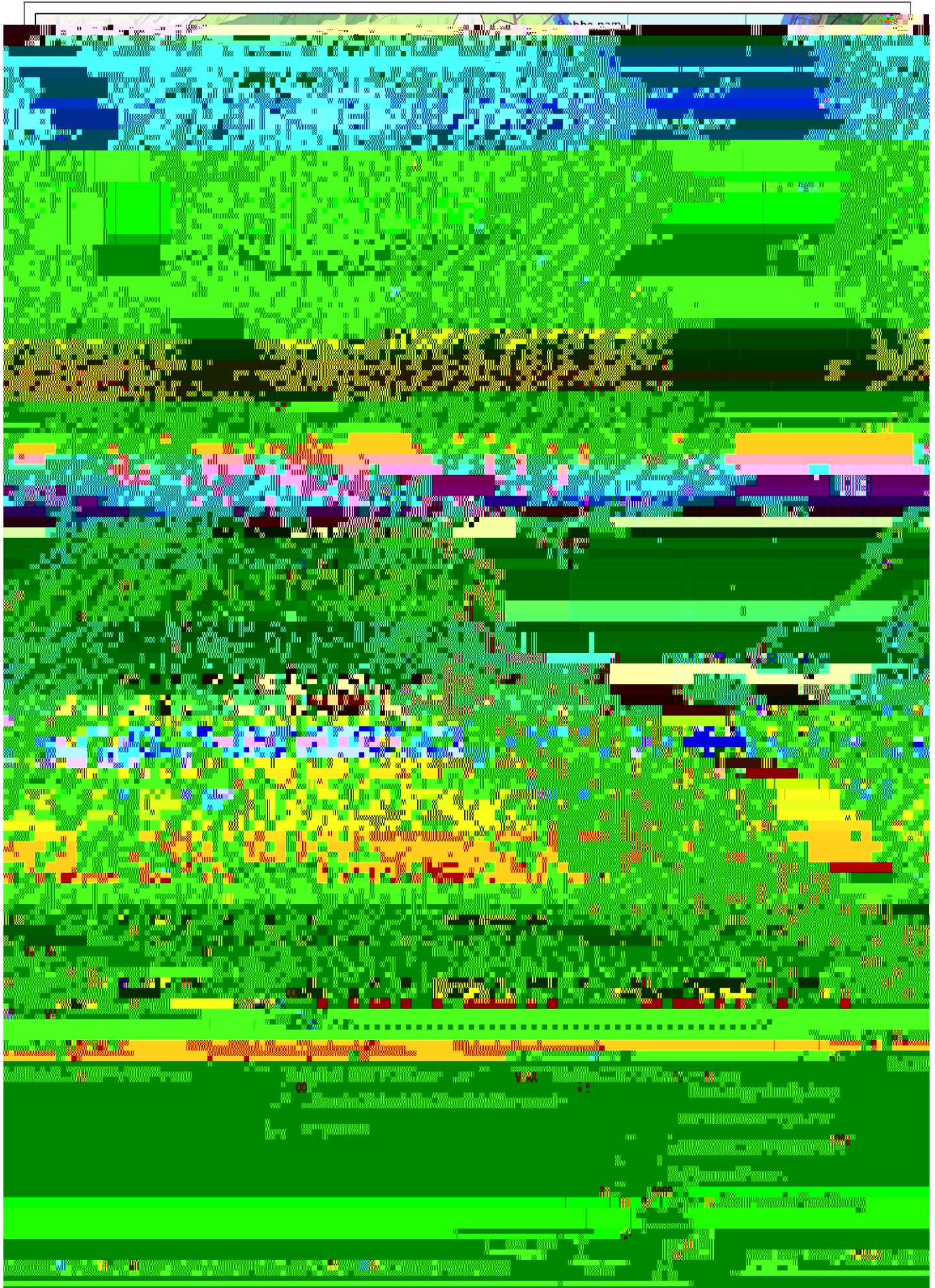
An out of service subsea telecommunications cable runs parallel to the shore along the full length of this policy zone.

Discharges

POLICY ZONE L MAP – Current Uses & Activities



POLICY ZONE L MAP – Designations, Wildlife Interests & Historic Features



OPPORTUNITIES AND CONSTRAINTS FOR FUTURE USE AND DEVELOPMENT

Constraints

Future Use

Infrastructure

CONSULTATION FOR AQUACULTURE DEVELOPMENT

As part of the development process, potential developers (during pre-application development scoping) and Argyll and Bute Council Planning Officers (during assessment of applications) are encouraged to consult with the following individuals and organisations in addition to the normal statutory consultees (see Appendix VI). Contact details for statutory and non-statutory consultees are provided in Appendix XI.

Consultees	New Mussel or Scallop
British Telecom	
Clyde Area Management Group	
Clyde Fishermen's Association	